

# Professionall

Solutii profesionale pentru echipamente profesionale



**GAS COMPONENTS**



**ELECTRIC COMPONENTS**



**WATER TECHNOLOGY**



**MECHANICAL COMPONENTS**



**TOOLS**

Spare parts suitable for

# RGV


## switches and momentary switches

### push/momentary push switches

30x22mm



1

No.	345712	Ref. No.	00000000296 00000700296	
description	push switch mounting measurements 30x22mm red/green 2CO 250V 16A Stop / I connection male faston 6.3mm ambient temperature max. 85°C protection IP40 with indicator			
For models:	250SCEV			
accessories for	345712			
	No.	301127	Ref. No.	00000000285 285
	protective cover internal size 30x55mm transparent			



1

No.	345510	Ref. No.	00000000108 00000000306
<b>description</b>	push switch mounting measurements 30x22mm red/green 2NO 250V 16A latching Stop / I connection male faston 6.3mm ambient temperature max. 85°C protection IP40 with indicator		

ø22mm



1

No.	301058	Ref. No.	00000000653
<b>description</b>	protective cover internal size 30x55mm		
<b>For models:</b>	300SCEP		




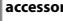
1

No.	301127	Ref. No.	00000000285
<b>description</b>	protective cover internal size 30x55mm transparent		
<b>For models:</b>	250SCEV		



1

	<b>No.</b>	346181	<b>Ref. No.</b>	00000000651
	<b>description</b>	push button mounting ø 21mm external size 30x55mm oval		
	<b>accessories for</b>	346181		
	<b>No.</b>	301058	<b>Ref. No.</b>	00000000653 653
	protective cover internal size 30x55mm			

accessories for		346181		
				
	No.	301127	Ref. No.	00000000285 285
	protective cover internal size 30x55mm transparent			

### miscellaneous



1

No.	601657	Ref. No.	401701
<b>description</b>	conversion kit 230/400V P max. 1150W		

### microswitches

#### pin-plunger actuated

#### miscellaneous



1


No.	347560	Ref. No.	00000000304
<b>description</b>	microswitch with plunger mounting distance 22mm thread M10 thread L 14mm 250V 12A 1NO connection male faston 6.3mm stroke 3.5mm ambient temperature max. 125°C type VRSR03AA1 actuating force: 135g		

## electronics

### PCBs



1

No.	400785	Ref. No.	00000000359	
description	PCB slicer 300SCEP 230V			
For models:	300SCEP			
accessories for	400785			
	No.	301058	Ref. No.	00000000653 653
	protective cover internal size 30x55mm			



## central units



1

<b>No.</b>	400788	<b>Ref. No.</b>	00000000297
<b>description</b>	control box for slicer 230V		
<b>For models:</b>	250SCEV		



1

<b>No.</b>	403682	<b>Ref. No.</b>	00000001752
<b>description</b>	control box for slicer 230V 50Hz edition since 04/2016		



1

<b>No.</b>	401701	<b>Ref. No.</b>	00000000655 00000009683
<b>description</b>	control box for slicer 400V		



1

<b>No.</b>	401855	<b>Ref. No.</b>	00000009240 00000009240 (296+297)
<b>description</b>	control box with pressure switch double for slicer 230V		

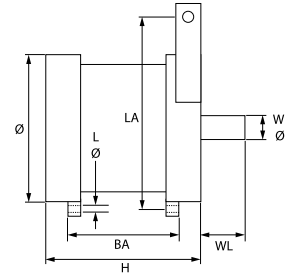
## motors

## motors

## for slicers



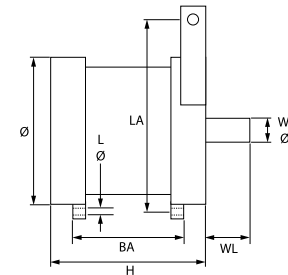
1



<b>No.</b>	500973	<b>Ref. No.</b>	00000000425
<b>description</b>	motor 230V 1 phase 180W 50Hz 1380rpm shaft ø 15mm shaft length 28mm ø 115mm H 112mm mounting distance 75mm hole distance 145mm hole ø 6mm type H60-425 300 ELETTRMECANICA capacitor 10µF		
<b>For models:</b>	300SCEP		



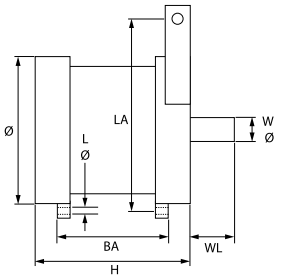
1




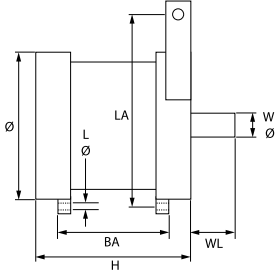
<b>No.</b>	501532	<b>Ref. No.</b>	00000001755
<b>description</b>	motor 230V 1 phase 390W 50Hz 1380rpm shaft ø 14.5mm shaft length 35mm ø 113mm H 122mm mounting distance 80mm hole distance 150mm hole ø 6mm type H70 300 edition since 04/2016 capacitor 10µF		



1


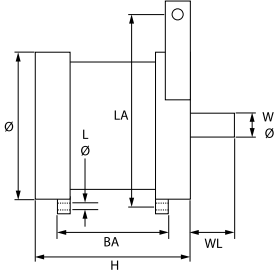


<b>No.</b>	501530	<b>Ref. No.</b>	00000001753
<b>description</b>	motor 230V 1 phase 50Hz 1380rpm shaft ø 15mm shaft length 25mm 195-220 edition since 04/2016		


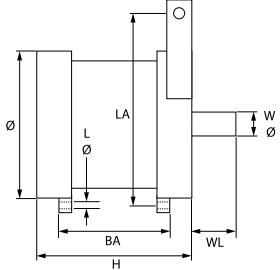
1

<b>No.</b>	501427	<b>Ref. No.</b>	00000700283
<b>description</b>	motor 230V 1 phase 50Hz 1380rpm shaft ø 15mm shaft length 25mm ø 115mm H 86mm mounting distance 44mm hole distance 145mm hole ø 6mm type H35-700283		


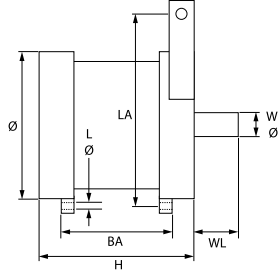
1

<b>No.</b>	501531	<b>Ref. No.</b>	00000001754
<b>description</b>	motor 230V 1 phase 50Hz 1380rpm shaft ø 15mm shaft length 33mm 250 edition since 04/2016		


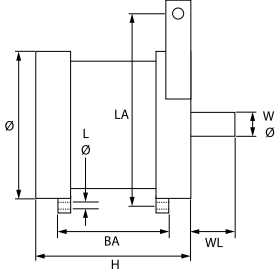
1

<b>No.</b>	500954	<b>Ref. No.</b>	00000001150
<b>description</b>	motor 230V 1 phase 50Hz 1380rpm shaft ø 15mm shaft length 28mm ø 115mm H 112mm mounting distance 75mm hole distance 145mm hole ø 8mm type H60-1150 300 S-G ELETTROMECHANICA L 135mm W 115mm capacitor 10µF		


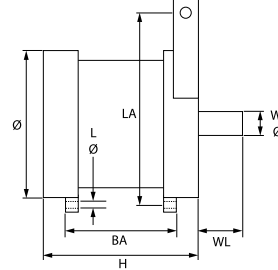
1

<b>No.</b>	501434	<b>Ref. No.</b>	00000000423
<b>description</b>	motor 230V 1 phase 50Hz 1380rpm shaft ø 15mm shaft length 33mm ø 113mm H 91mm mounting distance 49mm hole distance 150mm hole ø 6mm type H40-423 ELETTROMECHANICA capacitor 8µF		

1

<b>No.</b>	500923	<b>Ref. No.</b>	00000000508
<b>description</b>	motor 230V 1 phase 50Hz 1380rpm shaft ø 15mm shaft length 28mm ø 115mm H 87mm mounting distance 49mm hole distance 145mm hole ø 6mm type H35-508 220-250 ELETTROMECHANICA		


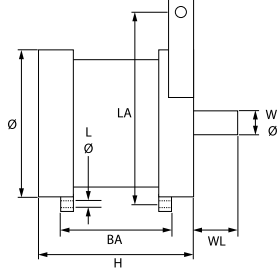
1

<b>No.</b>	501433	<b>Ref. No.</b>	00000000681
<b>description</b>	motor 230V 1 phase 50Hz 1380rpm shaft ø 15mm shaft length 35mm ø 113mm H 121mm mounting distance 79mm hole distance 150mm hole ø 6mm type H70-681 ELETTROMECHANICA capacitor 10µF		



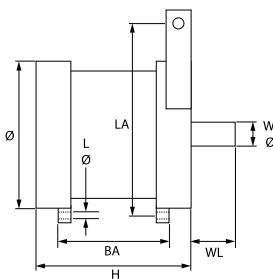

1

<b>No.</b>	500912	<b>Ref. No.</b>	00000000510
<b>description</b>	motor 230V 1 phase 50Hz 1380rpm shaft ø 15mm shaft length 28mm ø 115mm H 92mm mounting distance 49mm hole distance 145mm hole ø 6mm type H40-510 250 ELETTROMECHANICA		
<b>For models:</b>	250SCEV		

1

<b>No.</b>	500956	<b>Ref. No.</b>	00000000577
<b>description</b>	motor 230V 1 phase 50Hz 1380rpm shaft ø 17mm shaft length 27mm ø 154mm H 130mm mounting distance 98mm hole distance 170mm hole ø 10mm type 125-40/577 350 ELETTROMECHANICA		



1

<b>No.</b>	500955	<b>Ref. No.</b>	00000009680
<b>description</b>	motor 230V 1 phase 50Hz 1380rpm type H70 ELETTRMECANICA capacitor 10μF		

## pumps

### booster pumps II

#### accessories



1

<b>No.</b>	365015	<b>Ref. No.</b>	00000000633
<b>description</b>	operating capacitor capacity 10μF 400V tolerance 5%Hz ambient temperature max. -25 to +85°C ø 35.5mm L 59mm M8 plastic connection male faston 6.3mm protection		
<b>For models:</b>	300SCEP		



1

<b>No.</b>	365012	<b>Ref. No.</b>	00000000149
<b>description</b>	operating capacitor capacity 6.3μF 450V tolerance 5% 50Hz ambient temperature max. -25 to +85°C ø 30mm L 61mm M8 plastic connection male faston 6.3mm protection		

## condensators & interference suppression filters

### operating capacitors

#### plastic



1

<b>No.</b>	365015	<b>Ref. No.</b>	00000000633
<b>description</b>	operating capacitor capacity 10μF 400V tolerance 5%Hz ambient temperature max. -25 to +85°C ø 35.5mm L 59mm M8 plastic connection male faston 6.3mm protection		
<b>For models:</b>	300SCEP		



1

<b>No.</b>	365014	<b>Ref. No.</b>	00000000582
<b>description</b>	operating capacitor capacity 12.5μF 450V tolerance 5%Hz ambient temperature max. -25 to +85°C ø 35mm L 70mm M8 plastic connection male faston 6.3mm 45S.C3DS.12.5 protection		



1

<b>No.</b>	365012	<b>Ref. No.</b>	00000000149
<b>description</b>	operating capacitor capacity 6.3μF 450V tolerance 5% 50Hz ambient temperature max. -25 to +85°C ø 30mm L 61mm M8 plastic connection male faston 6.3mm protection		




1

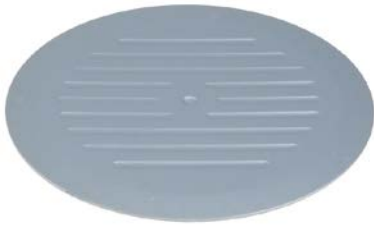
<b>No.</b>	365013	<b>Ref. No.</b>	00000000182
<b>description</b>	operating capacitor capacity 8μF 400V tolerance 5%Hz ambient temperature max. -25 to +85°C ø 31.5mm L 55mm M8 plastic connection male faston 6.3mm protection		
<b>For models:</b>	250SCEV		

## electric accessories

### cables

#### power supply cables

			
1			
<b>No.</b>	551085	<b>Ref. No.</b>	00000009171
<b>description</b>	cable CEE7/7 type E+F 3-pole contacts P+N+E 1.5mm <sup>2</sup> max. 16A max 230V 2m with plug H05VV-F 3G1.5		
<b>For models:</b>	250SCEV, 300SCEP		


			
1			
<b>No.</b>	697749	<b>Ref. No.</b>	00000000463 00000000490 490+709956
<b>description</b>	blade covering ø 209mm for knife ø 250mm mounting thread M6 fixing dimensions 12x12mm aluminium		
<b>For models:</b>	250SCEV		

## equipment-specific units


### for slicers

#### covers

			
1			
<b>No.</b>	697472	<b>Ref. No.</b>	00000000489old
<b>description</b>	blade covering ø 180mm for knife ø 220mm mounting thread M6 fixing dimensions 12x12mm aluminium		

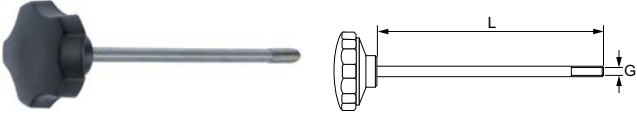
			
1			
<b>No.</b>	696528	<b>Ref. No.</b>	00000000489
<b>description</b>	blade covering ø 180mm for knife ø 220mm mounting thread M6 fixing dimensions 12x12mm cast aluminium edition since year of construction 2010		

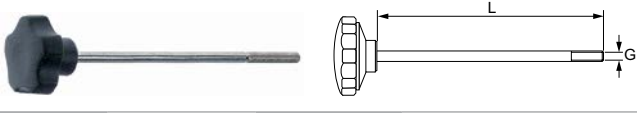
			
1			
<b>No.</b>	697447	<b>Ref. No.</b>	00000000195
<b>description</b>	blade covering ø 209mm for knife ø 250mm aperture 9x9mm aluminium 25GL Dom. /25GS Dom.		

			
1			
<b>No.</b>	697745	<b>Ref. No.</b>	00000000490+00000000777
<b>description</b>	blade covering ø 209mm for knife ø 250mm mounting thread M6 fixing dimensions 12x12mm with locking screw aluminium		

			
1			
<b>No.</b>	697744	<b>Ref. No.</b>	00000000403
<b>description</b>	blade covering ø 248mm for knife ø 300mm mounting thread M6 fixing dimensions 12x12mm aluminium		
<b>For models:</b>	300SCEP		

#### locking screws

			
1			
<b>No.</b>	698376	<b>Ref. No.</b>	00000001302 00000001302 nera 00000701302
<b>description</b>	locking screw thread M6 L 134mm black		

			
1			
<b>No.</b>	697438	<b>Ref. No.</b>	00000000817
<b>description</b>	locking screw thread M6 L 145mm handle ø 40mm		
<b>For models:</b>	250SCEV		



<b>No.</b>	696521	<b>Ref. No.</b>	00000009956
<b>description</b>	locking screw thread M6 L 154mm handle ø 39mm for model 22/25/275/300		

<b>No.</b>	697439	<b>Ref. No.</b>	00000000777
<b>description</b>	locking screw thread M6 L 155mm handle ø 40mm		
<b>For models:</b>	300SCEP		

<b>No.</b>	696602	<b>Ref. No.</b>	00000009958
<b>description</b>	locking screw thread M6 L 188mm handle ø 39mm for model 300/S-G, Dolly Verticale VS300		

<b>No.</b>	697379	<b>Ref. No.</b>	00000001024 00000001142
<b>description</b>	locking screw thread M6 L 190mm handle ø 40mm		

<b>No.</b>	698629	<b>Ref. No.</b>	00000709956
<b>description</b>	locking screw thread M6 L 155mm ø 10mm L1 55mm handle ø 29mm		

<b>No.</b>	697437	<b>Ref. No.</b>	00000000572
<b>description</b>	locking screw thread M6 L 200mm ø 10mm L1 50mm handle ø 40mm		

## handles

<b>No.</b>	697935	<b>Ref. No.</b>	00000000378+00000000371 378+371
<b>description</b>	star handle thread M8 ø 50mm L 29mm black with thread bolt		

## adjustment knobs

<b>No.</b>	697419	<b>Ref. No.</b>	00000000130 00000700130
<b>description</b>	adjusting knob 0-15 ø 55mm shaft ø 12mm shaft L 28mm handle ø 42mm 250		
<b>For models:</b>	250SCEV		

<b>No.</b>	696522	<b>Ref. No.</b>	00000009503
<b>description</b>	adjusting knob 0-22 ø 68mm shaft ø 18mm shaft L 50mm handle ø 68mm turn direction left		

<b>No.</b>	698456	<b>Ref. No.</b>	00000000631
<b>description</b>	adjusting knob 0-23 ø 68mm shaft ø 18mm shaft L 67mm handle ø 68mm		
<b>For models:</b>	300SCEP		

## eccentric disc for slice thickness

<b>No.</b>	697470	<b>Ref. No.</b>	00000000830
<b>description</b>	eccentrics for cutting thickness hole ø 12mm groove width 6mm ED ø 52mm thickness 21.5mm		

<b>No.</b>	697471	<b>Ref. No.</b>	00000000379
<b>description</b>	eccentrics for cutting thickness hole ø 12mm groove width 6mm ED ø 58mm thickness 21mm		
<b>For models:</b>	250SCEV		

## spring washers



1

<b>No.</b>	697479	<b>Ref. No.</b>	00000000856
<b>description</b>	spring washer ID ø 14mm ED ø 21mm Qty 1 pcs		



1

<b>No.</b>	697478	<b>Ref. No.</b>	00000000671
<b>description</b>	spring washer ID ø 19mm ED ø 26mm Qty 1 pcs		
<b>For models:</b>	300SCEP		

## guiding pieces

## for sliding plates



1

<b>No.</b>	697483	<b>Ref. No.</b>	00000000117
<b>description</b>	guide 195		



1

<b>No.</b>	697448	<b>Ref. No.</b>	00000009177
<b>description</b>	guide 220-250		



1

<b>No.</b>	696524	<b>Ref. No.</b>	00000000602 00000009691 9691 696524
<b>description</b>	guide L 117mm W 92mm H 51mm hole ø 18mm shaft intake ø 16mm aluminium		



1

<b>No.</b>	697477	<b>Ref. No.</b>	00000000126
<b>description</b>	connection plate L 75mm W 15mm		

## for carriage



1

<b>No.</b>	696510	<b>Ref. No.</b>	00000009466 9466 (GFS 1022 Metro)
<b>description</b>	guide 220		

## bushes



1

<b>No.</b>	698626	<b>Ref. No.</b>	00000000119
<b>description</b>	bush ED ø 18mm ID ø 16mm H 15mm		
<b>For models:</b>	300SCEP		



1

<b>No.</b>	698627	<b>Ref. No.</b>	00000000611
<b>description</b>	bush ED ø 8mm ID ø 5mm H 10mm		
<b>For models:</b>	300SCEP		

## spindles



1

<b>No.</b>	697782	<b>Ref. No.</b>	00000000501
<b>description</b>	spindle for carriage ø 16mm L 390mm thread M8		
<b>For models:</b>	250SCEV		



1

<b>No.</b>	697449	<b>Ref. No.</b>	00000000944
<b>description</b>	spindle for sliding plate ø 12mm L 160mm Lady		



## housings

## bottom parts



1

No.	696512	Ref. No.	00000000504
description	bottom plate 220		



1

No.	696345	Ref. No.	00000000516
description	bottom plate L 390mm W 190mm plastic 300		
For models:	250SCEV		



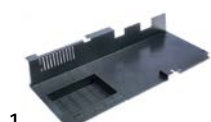
1

No.	698393	Ref. No.	00000000701 701/A
description	bottom plate L 409mm W 174mm plastic		



1

No.	698275	Ref. No.	00000000768 Lusso
description	bottom plate L 448mm W 200mm plastic 300		



1

No.	698276	Ref. No.	00000000768 Dolly 00000000768 metro
description	bottom plate L 448mm W 200mm plastic 300 METRO FRANCE		



1

No.	698389	Ref. No.	00000000768
description	cover L 447mm W 180mm plastic		
For models:	300SCEP		

## housings



1

No.	699017	Ref. No.	00000000500 (220)
description	housing L 400mm W 260mm 220		



1

No.	699030	Ref. No.	00000000500 (250)
description	housing L 400mm W 260mm 250		

## hand guard



1

No.	697754	Ref. No.	00000000784
description	hand protection for knife ø 300mm H 125mm W 60mm thickness 1.2mm hole ø 6.5mm mounting distance 84mm stainless steel		
For models:	300SCEP		



1

No.	696511	Ref. No.	00000000197 00000000328 00000000329
description	wiper for knife ø 220/250mm stainless steel		
For models:	250SCEV		




1


No.	697474	Ref. No.	00000000326/3
description	hand protection food holder 220 H 165mm W 250mm thickness 4mm hole ø 6.8mm mounting distance 78mm		





1

No.	697473	Ref. No.	00000000326/1
description	hand protection food holder 250 H 165mm W 250mm thickness 4mm hole ø 6.8mm mounting distance 90mm		

			
1			
<b>No.</b>	697446	<b>Ref. No.</b>	00000000407
<b>description</b>	hand protection food holder 300 H 300mm W 163mm thickness 5.4mm mounting distance 110mm		
<b>For models:</b>	300SCEP		


			
1			
<b>No.</b>	697755	<b>Ref. No.</b>	00000000162
<b>description</b>	hand protection for carriage 300 H 180mm W 152mm thickness 5mm hole ø 10mm mounting distance 110mm plastic		
<b>For models:</b>	300SCEP		


			
1			
<b>No.</b>	697826	<b>Ref. No.</b>	00000000924
<b>description</b>	hand protection for slicer		
<b>For models:</b>	250SCEV		


			
1			
<b>No.</b>	698964	<b>Ref. No.</b>	00000000482
<b>description</b>	hand protection for slicer 195-220		

## h2&gt;accessories

			
1			
<b>No.</b>	697482	<b>Ref. No.</b>	00000000338 00000000446
<b>description</b>	screw thread M5 ø 8mm L 15mm		
<b>For models:</b>	250SCEV, 300SCEP		

			
1			
<b>No.</b>	697481	<b>Ref. No.</b>	00000000623
<b>description</b>	Thumb screw thread M6 thread L 8mm ø 14mm H 6mm SS		
<b>For models:</b>	250SCEV, 300SCEP		


			
1			
<b>No.</b>	698640	<b>Ref. No.</b>	00000009924 9933
<b>description</b>	blade pulley complete with shaft shaft ø 14 shaft length 95mm mounting thread M5 3 hole fixing		


			
1			
<b>No.</b>	697747	<b>Ref. No.</b>	00000009920
<b>description</b>	blade pulley with spindle D1 ø 40mm D2 ø 64.3mm D3 ø 67.5mm shaft ø 14 L 33mm shaft length 152mm mounting thread M5 mounting ø 3-hole		


			
1			
<b>No.</b>	697746	<b>Ref. No.</b>	00000009469
<b>description</b>	blade pulley with spindle D1 ø 40mm D2 ø 76mm shaft ø 16 L 40mm shaft length 157mm mounting thread M5 mounting ø 3-hole		
<b>For models:</b>	300SCEP		
<b>spare parts for</b>	697746		
	<b>No.</b>	514030	<b>Ref. No.</b> —
	retaining ring shaft ø 20mm thickness 1.3mm steel DIN 471		
	<b>No.</b>	523512	<b>Ref. No.</b> 00000000632 632
	deep-groove ball bearing type 6204-2RS shaft ø 20mm ED ø 47mm W 14mm with sealing discs deep-groove ball bearing DIN 625-1		
	<b>No.</b>	692029	<b>Ref. No.</b> —
	retaining ring bore ø 47mm thickness 1.8mm steel DIN 472		


## h2&gt;food holders

## h2&gt;handles

			
1			
<b>No.</b>	697432	<b>Ref. No.</b>	00000000825
<b>description</b>	cone handle thread M6 ø 26mm plastic L 70mm thread L 6mm		
<b>For models:</b>	250SCEV		


			
1			
<b>No.</b>	111123	<b>Ref. No.</b>	00000000452 700452
<b>description</b>	handle thread M10 IT ø 30mm L 110mm D1 ø 65mm		
<b>For models:</b>	300SCEP		


			
1			
<b>No.</b>	698642	<b>Ref. No.</b>	00000001130
<b>description</b>	handle thread M10 ø 59mm L 100mm aluminium		




1


<b>No.</b>	696515	<b>Ref. No.</b>	00000001242	
<b>description</b>	handle thread M10x1.5 ø 34mm L 88mm food holder			
<b>accessories for</b>	696515			
	<b>No.</b>	696517	<b>Ref. No.</b>	00000800678 800678
	thread bolt for handle ø 12mm L 64mm thread M6/M10 stainless steel			




			
1			
<b>No.</b>	692150	<b>Ref. No.</b>	00000800298+RED
<b>description</b>	handle thread M6 ø 25mm D1 ø 65mm L 122mm plastic red		


			
1			
<b>No.</b>	697429	<b>Ref. No.</b>	00000000298 00000000298+BLACK 00000700298
<b>description</b>	handle thread M6 ø 25mm L 126mm with hand guard D1 ø 70mm		
<b>For models:</b>	250SCEV		


food holders





1


No.	698644	Ref. No.	00000000608 000000009608
description	food holder 300-350 L 290mm hole ø 12mm handle M10 CE		
For models:	300SCEP		
accessories for	698644		
	No.	110703	Ref. No. 00000000627 627
cylindrical handle thread M10 ø 28mm L 87mm			

			
1			
<b>No.</b>	697444	<b>Ref. No.</b>	000000009686
<b>description</b>	food holder 300-350 L 290mm hole ø 12mm with handle		


			
1			
<b>No.</b>	698418	<b>Ref. No.</b>	000000009206 000000009878
<b>description</b>	food holder L 240mm hole ø 12mm handle M6 with handle		

accessories			
			
1			
<b>No.</b>	698630	<b>Ref. No.</b>	00000000827
<b>description</b>	spike food holder ø 3mm L 11.5mm		
<b>For models:</b>	250SCEV, 300SCEP		

			
1			
<b>No.</b>	697480	<b>Ref. No.</b>	00000000151
<b>description</b>	stop bolt food holder ø 7.5mm L 8mm plastic		
<b>For models:</b>	250SCEV, 300SCEP		




1


<b>No.</b>	696517	<b>Ref. No.</b>	00000800678	
<b>description</b>	thread bolt for handle ø 12mm L 64mm thread M6/M10 stainless steel			
<b>For models:</b>	250SCEV			
<b>accessories for</b>	696517			
	<b>No.</b>	696515	<b>Ref. No.</b>	00000012421242
handle thread M10x1.5 ø 34mm L 88mm food holder				


## blades


### standard

			
1			
<b>No.</b>	697546	<b>Ref. No.</b>	00000000254
<b>description</b>	slicing machine blade ED ø 195mm seat ø 30mm 3-hole ID ø 155mm H 12.8mm C45 standard		

			
1			
<b>No.</b>	697436	<b>Ref. No.</b>	00000000855
<b>description</b>	slicing machine blade ED ø 220mm seat ø 40mm 3-hole ID ø 180mm H 15.5mm C45		


			
1			
<b>No.</b>	697365	<b>Ref. No.</b>	00000000142
<b>description</b>	slicing machine blade ED ø 250mm seat ø 40mm 3-hole ID ø 210mm H 17.5mm C45 standard		
<b>For models:</b>	250SCEV		


			
1			
<b>No.</b>	697385	<b>Ref. No.</b>	00000000636
<b>description</b>	slicing machine blade ED ø 300mm seat ø 40mm 3-hole ID ø 250mm H 20mm C45 standard		
<b>For models:</b>	300SCEP		

			
1			
<b>No.</b>	697399	<b>Ref. No.</b>	00000000422
<b>description</b>	slicing machine blade ED ø 350mm seat ø 57mm 4 hole ID ø 280mm H 22.5mm C45 standard		


## sharpener units

### lids

			
1			
<b>No.</b>	696514	<b>Ref. No.</b>	00000000863
<b>description</b>	lid for sharpener units L 116mm W 100mm mounting distance 26mm		
<b>For models:</b>	250SCEV		

			
1			
<b>No.</b>	698643	<b>Ref. No.</b>	00000000596
<b>description</b>	lid for sharpener units L 150mm W 120mm		
<b>For models:</b>	300SCEP		

## holders

			
1			
<b>No.</b>	696493	<b>Ref. No.</b>	000000007710000009771771+772
<b>description</b>	bracket for sharpener units L 60mm W 31mm H 78mm hole ø 12mm mounting thread M6 with fastening angle		
<b>For models:</b>	300SCEP		

## knobs



1

No.	697441	Ref. No.	00000000854
description	locking screw thread M5 handle ø 25mm black L 30mm		
For models:	250SCEV		



1

No.	696518	Ref. No.	00000009954
description	locking screw thread M5 L 47mm handle ø 25mm silver		



1

No.	697428	Ref. No.	00000000138
description	locking screw thread M6 handle ø 25mm black L 15mm		



1

No.	697384	Ref. No.	00000000734
description	locking screw thread M6 handle ø 25mm black L 54mm		
For models:	300SCEP		



1

No.	696523	Ref. No.	00000009510
description	locking screw thread M6 L 53mm handle ø 34mm silver		



1

No.	697445	Ref. No.	00000000677
description	mushroom cap handle thread M6 handle ø 33mm L 26mm plastic black		
For models:	300SCEP		

## sharpener units



1

No.	697398	Ref. No.	00000009875
description	blade sharpener 220/250 edition until year of construction 2000		



1

No.	697397	Ref. No.	00000009864
description	blade sharpener 220/250/275		
For models:	250SCEV		



1

No.	697354	Ref. No.	00000009471
description	blade sharpener 275-300-350		



1


No.	697376	Ref. No.	00000001151
description	blade sharpener 300		
spare parts for	697376		





No.	697377	Ref. No.	00000000720
description	grindstone ø 51mm thickness 12mm bore ø 8mm grained coarse without bevel		




No.	697378	Ref. No.	00000000721
description	grindstone ø 51mm thickness 7mm bore ø 8mm grained fine with bevel, without hub		







1

<b>No.</b>	697355	<b>Ref. No.</b>	00000009693	
<b>description</b>	blade sharpener 350			
<b>For models:</b>	300SCEP			
<b>spare parts for</b>	697355			
	<b>No.</b>	697377	<b>Ref. No.</b>	0000000720720
	grindstone ø 51mm thickness 12mm bore ø 8mm grained coarse without bevel			
	<b>No.</b>	697378	<b>Ref. No.</b>	0000000721721
	grindstone ø 51mm thickness 7mm bore ø 8mm grained fine with bevel, without hub			





1


No.	697420	Ref. No.	00000009168	
description	blade sharpener PARKER			
spare parts for	697420			
	No.	697423	Ref. No.	0000000816816
grindstone ø 40mm thickness 8mm bore ø 6mm grained fine with bevel, with hub				
	No.	697424	Ref. No.	0000000871871
grindstone ø 40mm thickness 8mm bore ø 6mm grained coarse with bevel, with hub				
	No.	697428	Ref. No.	0000000138138
locking screw thread M6 handle ø 25mm black L 15mm				


spindles			
			
1			
<b>No.</b>	698633	<b>Ref. No.</b>	00000006670000000778
<b>description</b>	spindle for sharpener units ø 12mm L 95mm thread M5		

grindstones			
			
1			
<b>No.</b>	697378	<b>Ref. No.</b>	0000000721
<b>description</b>	grindstone ø 51mm thickness 7mm bore ø 8mm grained fine with bevel, without hub		
<b>For models:</b>	300SCEP		

grindstones with hub			
			
1			
<b>No.</b>	697424	<b>Ref. No.</b>	0000000871
<b>description</b>	grindstone ø 40mm thickness 8mm bore ø 6mm grained coarse with bevel, with hub		

			
1			
<b>No.</b>	697423	<b>Ref. No.</b>	0000000816
<b>description</b>	grindstone ø 40mm thickness 8mm bore ø 6mm grained fine with bevel, with hub		

			
1			
<b>No.</b>	697421	<b>Ref. No.</b>	0000000641
<b>description</b>	grindstone ø 45mm thickness 8mm bore ø 6mm grained coarse with bevel, with hub		
<b>For models:</b>	250SCEV		

			
1			
<b>No.</b>	697422	<b>Ref. No.</b>	0000000642
<b>description</b>	grindstone ø 45mm thickness 8mm bore ø 6mm grained fine with bevel, with hub		
<b>For models:</b>	250SCEV		

grindstones cup form			
			
1			
<b>No.</b>	697377	<b>Ref. No.</b>	0000000720
<b>description</b>	grindstone ø 51mm thickness 12mm bore ø 8mm grained coarse without bevel		
<b>For models:</b>	300SCEP		



## carriages

### handles



1

No.	697380	Ref. No.	00000000432+00000000431 432+431
description	adjusting knob thread M10 handle ø 66mm black 300-330-350 L 29mm		



1

No.	697442	Ref. No.	00000000676
description	cylindrical handle thread M12 ø 28mm L 30mm		
For models:	300SCEP		



1

No.	697440	Ref. No.	00000000432
description	handle thread M10 handle ø 66mm H 51mm black		
For models:	300SCEP		



1

No.	697381	Ref. No.	00000000629
description	handle thread M12 handle ø 66mm H 50mm black		



1

No.	697427	Ref. No.	00000000881
description	locking screw thread M8 handle ø 28mm black L 22mm		



1

No.	697426	Ref. No.	00000000833 old
description	locking screw thread M8 handle ø 43mm black L 22mm		



1

No.	697425	Ref. No.	378+371 (old version)
description	locking screw thread M8 handle ø 50mm black 220/250/275		



1

No.	696556	Ref. No.	00000000378 00000000833
description	locking screw thread M8x1.25 thread L 23mm handle ø 50mm black plastic 250		
For models:	250SCEV		



1

No.	697935	Ref. No.	00000000378+00000000371 378+371
description	star handle thread M8 ø 50mm L 29mm black with thread bolt		

## accessories




1


No.	696516	Ref. No.	00000000186
description	bracket for carriage L 56mm aluminium		




1


No.	698631	Ref. No.	00000000895
description	spindle for carriage thread M6 L 170mm ø 12mm		
For models:	250SCEV		

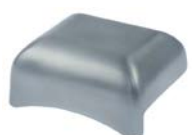
			
1			
<b>No.</b>	697827	<b>Ref. No.</b>	00000000678
<b>description</b>	spindle for slicer thread M10 L 95mm thread L 12/15mm total length 122mm ø 16mm stainless steel		
<b>For models:</b>	300SCEP		


			
1			
<b>No.</b>	698628	<b>Ref. No.</b>	00000000774
<b>description</b>	threaded shaft thread M6 L 37mm for slicer		
<b>For models:</b>	300SCEP		


## miscellaneous

			
1			
<b>No.</b>	697356	<b>Ref. No.</b>	00000000300
<b>description</b>	bracket thread M10x0.75 ø 30mm for microswitch ID ø 14.5mm thickness 13mm mounting thread M5		

			
1			
<b>No.</b>	697476	<b>Ref. No.</b>	00000000509
<b>description</b>	bush ø 14mm L 88mm ID ø 12mm		
<b>For models:</b>	250SCEV		

			
1			
<b>No.</b>	698419	<b>Ref. No.</b>	00000000867
<b>description</b>	cover L 115mm W 100mm for motor plastic		
<b>For models:</b>	250SCEV		

			
1			
<b>No.</b>	698388	<b>Ref. No.</b>	00000000765
<b>description</b>	mounting flange ø 18mm L 128mm W 28mm		
<b>For models:</b>	300SCEP		

			
1			
<b>No.</b>	698392	<b>Ref. No.</b>	00000000828
<b>description</b>	thread bolt thread M6 ø 6mm L 35mm for slicer		
<b>For models:</b>	250SCEV, 300SCEP		

## for vegetable slicers

### miscellaneous

			
1			
<b>No.</b>	110703	<b>Ref. No.</b>	00000000627
<b>description</b>	cylindrical handle thread M10 ø 28mm L 87mm		
<b>For models:</b>	300SCEP		


## for cheese graters

### miscellaneous

			
1			
<b>No.</b>	110703	<b>Ref. No.</b>	00000000627
<b>description</b>	cylindrical handle thread M10 ø 28mm L 87mm		
<b>For models:</b>	300SCEP		

## for tilting bratt pans


### miscellaneous

			
1			
<b>No.</b>	523510	<b>Ref. No.</b>	00000000860
<b>description</b>	deep-groove ball bearing type 6202-2RS shaft ø 15mm ED ø 35mm W 11mm with sealing discs deep-groove ball bearing DIN 625-1		
<b>For models:</b>	250SCEV		

## for rolling grills

### pipes

### bushes

			
1			
<b>No.</b>	694605	<b>Ref. No.</b>	00000100075
<b>description</b>	bushing set ED ø 38mm ID ø 29mm mounting ø 32 H 4.2/6.2mm PTFE		

## handles and hand wheels

### cylindrical handles

#### fixed



1

<b>No.</b>	110703	<b>Ref. No.</b>	00000000627
<b>description</b>	cylindrical handle thread M10 ø 28mm L 87mm		
<b>For models:</b>	300SCEP		



1

<b>No.</b>	698472	<b>Ref. No.</b>	00000000327
<b>description</b>	cylindrical handle thread M6 ø 24mm L 76mm black internal thread		
<b>For models:</b>	250SCEV		



1

<b>No.</b>	697442	<b>Ref. No.</b>	00000000676
<b>description</b>	cylindrical handle thread M12 ø 28mm L 30mm		
<b>For models:</b>	300SCEP		

### cone handles



1

<b>No.</b>	697432	<b>Ref. No.</b>	00000000825
<b>description</b>	cone handle thread M6 ø 26mm plastic L 70mm thread L 6mm		
<b>For models:</b>	250SCEV		

### mushroom cap handles



1

<b>No.</b>	697445	<b>Ref. No.</b>	00000000677
<b>description</b>	mushroom cap handle thread M6 handle ø 33mm L 26mm plastic black		
<b>For models:</b>	300SCEP		



1

<b>No.</b>	698641	<b>Ref. No.</b>	00000001111
<b>description</b>	mushroom cap handle thread M6 handle ø 34mm L 25mm aluminium		

## equipment feet and end caps

### screw-in feet



1

<b>No.</b>	701451	<b>Ref. No.</b>	00000001240
<b>description</b>	equipment foot thread M5 thread L 13mm ø 37.5mm H 25mm conical aluminium WS Qty 1 pcs bore ø 6mm		



1

<b>No.</b>	697770	<b>Ref. No.</b>	00000000628
<b>description</b>	equipment foot thread M8 thread L 12mm ø 47mm H 35mm Qty 1 pcs		
<b>For models:</b>	300SCEP		



1

<b>No.</b>	698495	<b>Ref. No.</b>	00000001251
<b>description</b>	equipment foot thread M8 thread L 9mm ø 48mm H 43mm conical aluminium WS Qty 1 pcs		

## bolting feet



<b>No.</b>	697433	<b>Ref. No.</b>	00000000140 00000700140
<b>description</b>	equipment foot $\varnothing$ 35mm H 26mm bore $\varnothing$ 5mm Qty 1 pcs		
<b>For models:</b>	250SCEV		

## gaskets

### shaft gaskets

#### shaft gaskets



<b>No.</b>	697475	<b>Ref. No.</b>	00000012671
<b>description</b>	shaft seal ID $\varnothing$ 20mm ED $\varnothing$ 30mm thickness 5mm		
<b>For models:</b>	250SCEV		

## transmission technology and ball bearings

### ball bearings

#### deep-groove ball bearings 2RS



<b>No.</b>	523501	<b>Ref. No.</b>	00000000637
<b>description</b>	deep-groove ball bearing type 608-2RS shaft $\varnothing$ 8mm ED $\varnothing$ 22mm W 7mm with sealing discs deep-groove ball bearing DIN 625-1		
<b>For models:</b>	300SCEP		



<b>No.</b>	523510	<b>Ref. No.</b>	00000000860
<b>description</b>	deep-groove ball bearing type 6202-2RS shaft $\varnothing$ 15mm ED $\varnothing$ 35mm W 11mm with sealing discs deep-groove ball bearing DIN 625-1		
<b>For models:</b>	250SCEV		



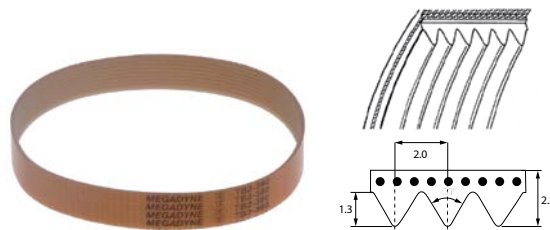
<b>No.</b>	523512	<b>Ref. No.</b>	00000000632
<b>description</b>	deep-groove ball bearing type 6204-2RS shaft $\varnothing$ 20mm ED $\varnothing$ 47mm W 14mm with sealing discs deep-groove ball bearing DIN 625-1		
<b>For models:</b>	300SCEP		



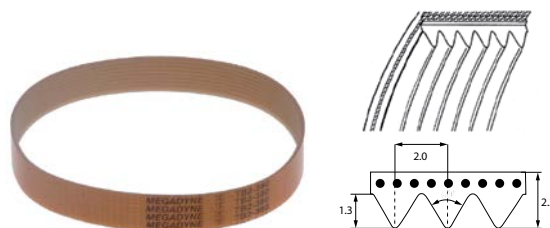
<b>No.</b>	523504	<b>Ref. No.</b>	00000000862
<b>description</b>	deep-groove ball bearing type 626-2RS shaft $\varnothing$ 6mm ED $\varnothing$ 19mm W 6mm with sealing discs deep-groove ball bearing DIN 625-1		
<b>For models:</b>	250SCEV		

## drive belts

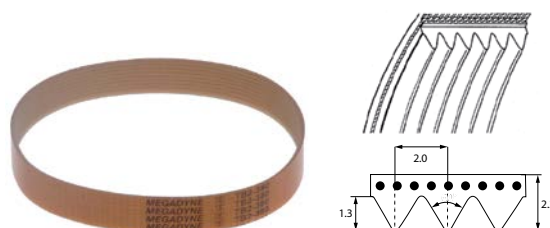
### poly-v belts



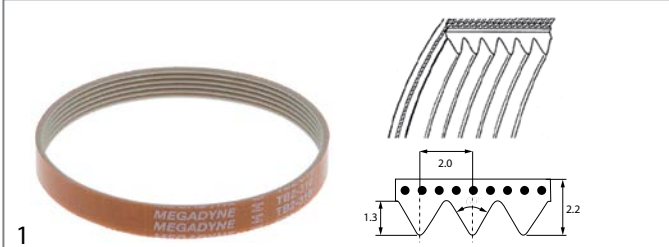
<b>No.</b>	698215	<b>Ref. No.</b>	00000000635
<b>description</b>	poly-v belt grooves 10 W 20mm L 400mm profile TB2		
<b>For models:</b>	300SCEP		

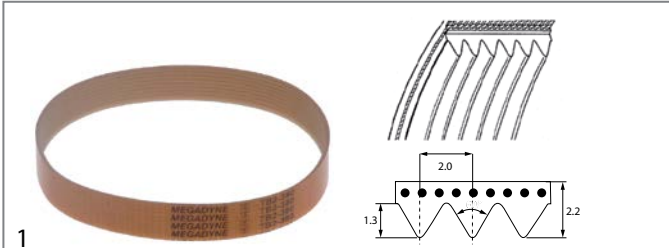


<b>No.</b>	698216	<b>Ref. No.</b>	00000001026
<b>description</b>	poly-v belt grooves 10 W 20mm L 480mm profile TB2		



<b>No.</b>	698213	<b>Ref. No.</b>	00000000573
<b>description</b>	poly-v belt grooves 11 W 22mm L 430mm profile TB2		


			
<b>No.</b>	698963	<b>Ref. No.</b>	00000000492
<b>description</b>	poly-v belt grooves 5 W 10mm L 310mm profile TB2		

			
<b>No.</b>	698217	<b>Ref. No.</b>	00000000861
<b>description</b>	poly-v belt grooves 7 W 14mm L 330mm profile TB2		
<b>For models:</b>	250SCEV		


## fastening material

### screws

#### side bolts


			
<b>No.</b>	560551	<b>Ref. No.</b>	00000000615
<b>description</b>	side bolts thread M10 L 15mm SS Qty 1 pcs intake slotted head ø 24.5mm		
<b>For models:</b>	300SCEP		


### knurled screws

			
<b>No.</b>	697481	<b>Ref. No.</b>	00000000623
<b>description</b>	Thumb screw thread M6 thread L 8mm ø 14mm H 6mm SS		
<b>For models:</b>	250SCEV, 300SCEP		

### washers

#### spring washers

			
<b>No.</b>	697479	<b>Ref. No.</b>	00000000856
<b>description</b>	spring washer ID ø 14mm ED ø 21mm Qty 1 pcs		

			
<b>No.</b>	697478	<b>Ref. No.</b>	00000000671
<b>description</b>	spring washer ID ø 19mm ED ø 26mm Qty 1 pcs		
<b>For models:</b>	300SCEP		