

# Professionall

Solutii profesionale pentru echipamente profesionale



**GAS COMPONENTS**



**ELECTRIC COMPONENTS**



**WATER TECHNOLOGY**



**MECHANICAL COMPONENTS**



**TOOLS**

Spare parts suitable for

# DITOSAMA

## equipment-specific units

## for vegetable slicers

## ejector discs



1

<b>No.</b>	699131	<b>Ref. No.</b>	4277
<b>description</b>	ejector disc H 15mm ø 190mm seat ø 23/28mm		



1

<b>No.</b>	699111	<b>Ref. No.</b>	20-9209
<b>description</b>	ejector disc H 30mm ø 179mm shaft diameter 14x11mm		

## plungers



1

<b>No.</b>	699399	<b>Ref. No.</b>	4255
<b>description</b>	plunger L 175mm plastic		

## for potato peelers

## lids



1

<b>No.</b>	696727	<b>Ref. No.</b>	18116
<b>description</b>	lid ø 310mm ID ø 275mm H 60mm mounting distance 90mm plastic		

## for planetary mixers

## miscellaneous



1

<b>No.</b>	699257	<b>Ref. No.</b>	24679 24748
<b>description</b>	cotter pin set ø 8mm L 34mm		

## for hand blenders

## spare parts and accessories



1

<b>No.</b>	651048	<b>Ref. No.</b>	15906
<b>description</b>	coupling D1 ø 16mm L 33mm Qty 5 pcs int. ø 1 7.4mm		

## blender sticks

## spindles

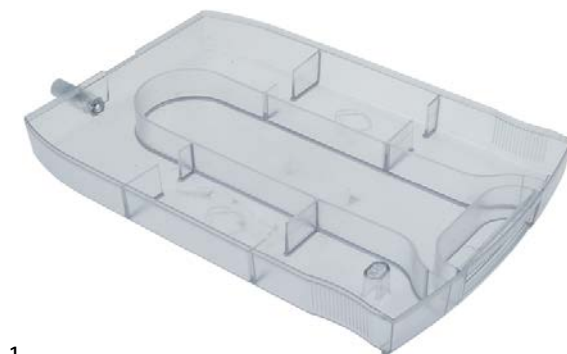


1

<b>No.</b>	698358	<b>Ref. No.</b>	0D3022
<b>description</b>	spindle assembled D1 ø 13.8mm L 320mm aluminium		

## for convection ovens/combi-steamers

## miscellaneous



1

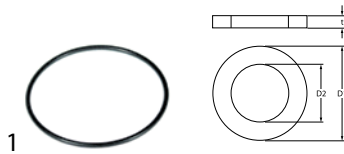
<b>No.</b>	696399	<b>Ref. No.</b>	OKB722
<b>description</b>	water container for combi-steamer L 400mm plastic W 238mm		



## gaskets

## O-rings

## EPDM



1

No.	502203	Ref. No.	0KQ652
description	O-ring EPDM thickness 3mm ID ø 51mm Qty 1 pcs		

## foam rubber gaskets



1

No.	901678	Ref. No.	1179 12111 23534
description	foam rubber gasket Qty 1200mm incl. adhesive for lid		

## special gaskets

## miscellaneous



1

No.	901678	Ref. No.	1179 12111 23534
description	foam rubber gasket Qty 1200mm incl. adhesive for lid		

## transmission technology and ball bearings

## ball bearings

## deep-groove ball bearings 2RS



1

No.	523528	Ref. No.	0HD046
description	deep-groove ball bearing type 6007-2RS shaft ø 35mm ED ø 62mm W 14mm with sealing discs deep-groove ball bearing DIN 625-1		



1

No.	523511	Ref. No.	3041
description	deep-groove ball bearing type 6203-2RS shaft ø 17mm ED ø 40mm W 12mm with sealing discs deep-groove ball bearing DIN 625-1		



1

No.	523513	Ref. No.	3043
description	deep-groove ball bearing type 6205-2RS shaft ø 25mm ED ø 52mm W 15mm with sealing discs deep-groove ball bearing DIN 625-1		



1

No.	523516	Ref. No.	3047
description	deep-groove ball bearing type 6303-2RS shaft ø 17mm ED ø 47mm W 14mm with sealing discs deep-groove ball bearing DIN 625-1		

## drive belts

## toothed belts



1

No.	692780	Ref. No.	3013
description	toothed belt profile 150XL075 L 380mm belt width 19mm teeth 75		



1

No.	698653	Ref. No.	4668
description	toothed belt profile V L 1000mm CODE 4668 W 31.5mm		

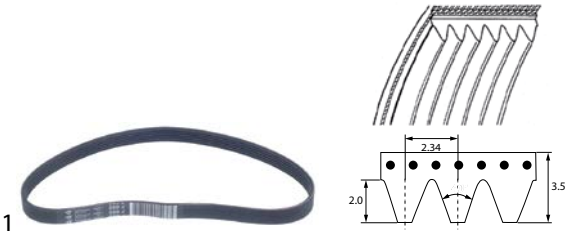


1

No.	698408	Ref. No.	3024
description	V-belt profile V L 875mm H 13mm teeth 121 splitting 4-3 rubber with textile insertion CODE 3024R W 39mm 414NV		



poly-v belts



No.	698409	Ref. No.	3020
description poly-v belt grooves 6 W 14mm L 559mm profile J			

springs

gas tension springs

gas tension springs



No.	692685	Ref. No.	FM640011
description gas tension spring 150N hub 100mm D1 ø 6mm D2 ø 15mm hole distance 260mm hole ø 6mm L 275mm			